

# BOLT SEALS



## BP CARGO BOLT - CONTAINER SEAL

### BP Cargo Bolt Seal

The BP Cargo Bolt Seal, compliant with ISO 17712 'H' standards, secures sea containers, box trucks, rail wagons, and other large transport containers. Made from plastic-coated steel, it features an anti-spin function to resist tampering. Each seal is uniquely numbered with a letter and a 6-digit code, lasered onto the bolt for added security. Removal requires a bolt cutter, ensuring robust protection for your cargo

Sales Units: 100 (SKU:3.23.001.B.YELLOW)

---

ISO-Classification	High Security
--------------------	---------------

[Read More](#)



## BP CARGO BOLT WITH BARCODE 128

ISO 17712-certified bolt seal designed for securing sea containers, box trucks, and rail wagons. Made of plastic-coated steel with anti-spin functionality for tamper resistance. Features a 6-digit consecutive number and barcode. Removal requires a bolt cutter.

Sales unit: 100 seals (SKU:3.23.005.B)

---

ISO-Classification	High Security
--------------------	---------------

[Read More](#)



## IP SEAL - CUSTOMISED

Certified to ISO PAS 17712:2013/C-TPAT, this high-security bolt seal secures sea containers, box trucks, railcars, and other transport containers. Its Anti-Spin Safety (ASS) mechanism offers exceptional tamper resistance. Both the bolt and locking chamber are marked with a matching prefix and 6-digit number for added security.

Sales units of 250 pices (SKU:3.04.410.B.YELLOW)

---

[Read More](#)



## BOLT SEAL - LOCKTAINER 2000 SH WITH BARCODE

High-security bolt seals for containers, trucks, and rail wagons. Available in 70.80 mm and 83.50 mm lengths with anti-spin technology to prevent tampering. Customizable with barcodes, logos, or text, these seals feature laser-marked numbering for enhanced security. (SKU:3.04.130.B.YELLOW\_BC)

---

ISO-Classification

High Security

[Read More](#)



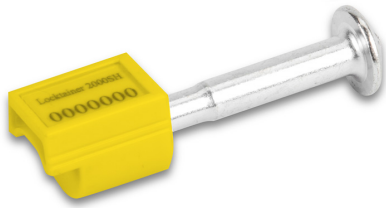
## LOCKTAINER 2000 SHC

A high-security bolt seal designed for tight spaces, featuring a bent steel bolt without plastic coating. Standard marking includes a letter and 6-digit number, with customization options available. Secures transport containers effectively and can only be removed with a bolt cutter.

Sales units of 100 units (SKU:3.04.149.B)

---

[Read More](#)



## LOCKTAINER 2000 SHR-C

Straight, uncoated steel bolt seal for high-security applications in transport containers. Features a customizable housing with consecutive numbering, barcodes, or logos. Provides tamper-evident sealing and requires a bolt cutter for removal, ensuring maximum protection. (SKU:3.04.319.B)

---

ISO-Classification

High Security

[Read More](#)



## IP SEAL

**IP Seal High-Security Bolt Seal:** Engineered for securing shipping containers, trucks, and rail wagons, this seal features an anti-spin locking mechanism with molded plastic-coated steel components. Marked with matching 6-digit numbers, it offers customizable barcodes and logos, ensuring tamper-evident, high-strength security. (SKU:3.04.401.B)

---

ISO-Classification

High Security

[Read More](#)