

SECURITY LABELS



MAGNET SEAL

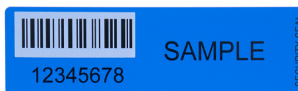
Antimagnetic tamper-evident sticker seal with a suspension that changes pattern upon magnetic field exposure. Features a visible 'OPENED' message if tampered with. Unique serial numbers on sticker and capsule ensure security. Used for gas, water, and electricity meters by regulatory authorities for monitoring and maintenance.

Sales Unit: 500 seals (SKU:3.32.300.K.RED)

ISO-Classification

Indicative

[Read More](#)



RESIDUE-FREE SECURITY LABEL

Non-residue adhesive labels ideal for securing parcels and sensitive surfaces. Includes a 7-digit number and optional barcode. Leaves no marks upon removal, making them perfect for reusable applications. Suitable for wood, glass, and metal. (SKU:3.11.110.K)

ISO-Classification

Indicative

[Read More](#)



SECURITY LABEL - RESIDUE

Adhesive labels designed to protect parcels, boxes, and devices. Features a 7-digit number and optional barcode. When tampered with, the "OPEN VOID" message appears, leaving residue on the surface for tamper evidence. Easy application on smooth, clean surfaces. (SKU:3.11.210.K)

ISO-Classification

Indicative

[Read More](#)



BC-SECURITY LABEL - CUSTOM SEAL

These tamper-evident labels meet German Customs standards and include a consignor's unique code number. They adhere to clean, smooth surfaces like lacquered metal, wood, and glass. Upon removal, they reveal 'OPEN VOID.' Provided on rolls, these labels are consecutively numbered and designed for seamless application. (SKU:3.29.001.K.RED)

ISO-Classification

Indicative

[Read More](#)



LABEL LOCK - RESIDUE

Label Lock security labels secure packages, boxes, and electronics, offering tamper evidence with their 'OPENED' marking when removed. Available in residue and non-residue options, each label is consecutively numbered and customizable. Ideal for securing crime scenes and protecting sensitive items. (SKU:3.15.009.K)

ISO-Classification

Indicative

[Read More](#)



LABEL LOCK NON-RESIDUE WITH DUAL NUMBER TAG

Label Lock non-residue labels with control sections provide a tamper-evident solution for securing packages, boxes, new car and airplane doors, computers, and crime scenes. They attach securely to various surfaces without leaving residue. Consecutively numbered, they include a control section for easy tracking, preventing errors or unauthorized access. (SKU:3.15.159.K)

ISO-Classification

Indicative

[Read More](#)



LABEL LOCK NON-RESIDUE.

Versatile non-residue security labels ideal for securing packages, boxes, doors, computers, and crime scenes. They attach to various surfaces like wood and metal without leaving residue. Consecutively numbered, they display "OPENED" upon removal, providing clear tamper evidence that cannot be reversed or concealed. (SKU:3.15.039.K)

ISO-Classification

Indicative

[Read More](#)



LABEL LOCK SECURITY TAPE

Reliable security tape for packaging and air cargo. Adheres securely to dirt-free surfaces, leaving a visible "OPENED" message when removed. Perforated every 150 mm with consecutive numbering for tracking. Perfect for maintaining secure supply chains but may leave residue on certain surfaces. (SKU:3.03.320.K)

ISO-Classification

Indicative

[Read More](#)



BROWN SECURITY TAPE

Security tape secures packages, boxes, and shrink-wrapped pallets, meeting AEO and CTPAT standards. It resembles conventional tape but reveals 'OPEN' in multiple languages when removed, leaving a non-reversible film. Ideal for tamper evidence, though residue may be challenging to remove from surfaces. (SKU:3.03.300.K.BRAUN)

ISO-Classification

Indicative

[Read More](#)