



METER SEALS



MAGNET SEAL

Antimagnetic tamper-evident sticker seal with a suspension that changes pattern upon magnetic field exposure. Features a visible 'OPENED' message if tampered with. Unique serial numbers on sticker and capsule ensure security. Used for gas, water, and electricity meters by regulatory authorities for monitoring and maintenance.

Sales Unit: 500 seals (SKU:3.32.300.K.RED)

ISO-Classification

Indicative

[Read More](#)



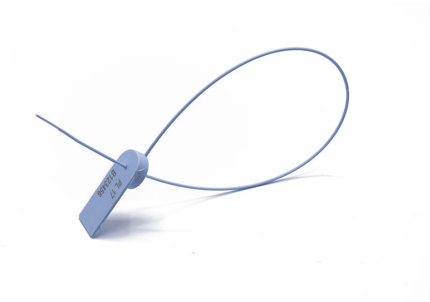
CARAT SEAL

An innovative polycarbonate meter seal with a two-part design for securing meters, containers, and installations. Its transparent body and locking insert allow visual inspection, ensuring tamper-evidence. Operational from -50°C to +120°C, it glows under UV light and offers unique laser-engraved serial numbers for reliability and security. (SKU:3.32.300.K.OR-GR)

ISO-Classification

Indicative

[Read More](#)



PL 17

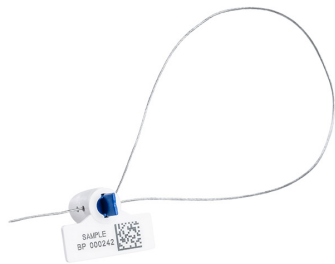
Polypropylene seal with a 1.4 mm tail and steel locking mechanism, ideal for water meters and textile labeling. Features a 6-digit sequential number, customizable text, or logo. Can be tightened manually and removed by hand or with a cutting tool.

Sales unit: 1000 seals (SKU:3.02.370.K)

ISO-Classification

Indicative

[Read More](#)



BP 110-XL TWISTER SEAL

This polycarbonate seal with a steel wire locks by winding the wire into the seal body via a twist axle. It features a 6-digit number and optional barcode or logo customization. Removal requires side cutters, and its integrated locking pawls prevent unwinding, ensuring tamper evidence. (SKU:3.19.010.D.BLUE)

ISO-Classification

Indicative

[Read More](#)



NOTOX

Polyethylene seals for securing meters, bags, and emergency exits. Used with copper, plastic, or galvanized wire or hemp cord. Secures with a simple knot and sealing pliers. Available in two sizes and multiple colors. Customizable with logos or initials via an embossing stamp. (SKU:3.222.6.0)

ISO-Classification

Indicative

[Read More](#)



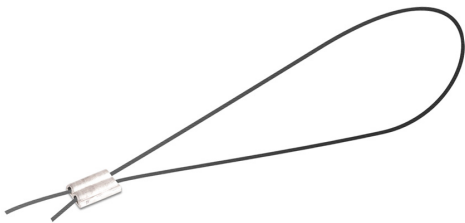
ALUCAST

The Alucast seal is a secure aluminum seal for meters, machines, and containers. Featuring galvanized steel wire and a crimped closure, it's available in two sizes. Alucast offers reliable sealing for high-security applications, removable with wire cutters. (SKU:3.04.200.S)

ISO-Classification

Indicative

[Read More](#)



ALUCAST WITH WIRE

Compact Alucast seal for securing meters, gaming machines, and ballot boxes. Made of aluminum with integrated galvanized steel wire. Fastens via sealing pliers, removable with wire cutters. (SKU:3.04.190.S)

ISO-Classification

Indicative

[Read More](#)



LEAD SEAL WITH WIRE

Lead Seal secures meters, gaming machines, and ballot boxes. Made of lead, it can be used with various wires or hemp string. Fastens with a Seal Nipper and requires cutting tools for removal. (SKU:3.07.050.S.BLANK)

ISO-Classification

Indicative

[Read More](#)



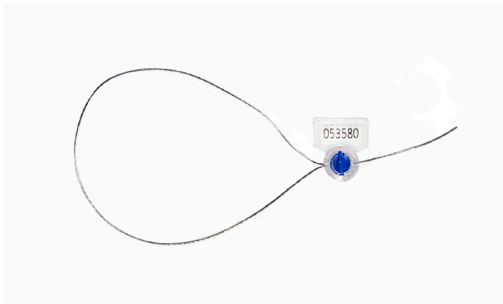
LEAD SEAL

Lead Seal for securing meters and ballot boxes. Use with wires or hemp string. Easily fastened with a Seal Nipper. Compatible with customized embossing options. Cutting tools required for removal. (SKU:3.07.010.S)

ISO-Classification

Indicative

[Read More](#)



BP 110 TWISTER

BP 110 Twister pull-tight seal secures meters and ballot boxes. Features stainless steel cable and acrylic body with optional logo or barcode. Removal requires wire cutters. (SKU:3.19.009.D)

ISO-Classification

Indicative

[Read More](#)



CRALU

Cralu roll-up seal secures mail and valuables containers using wire or hemp cord. Made of aluminum, it requires coding pliers for closure. Used with copper, galvanized steel, or plastic wires. Ideal for reliable tamper-evidence in various applications. (SKU:3.03.130.M.BLANK)

ISO-Classification

Indicative

[Read More](#)



SEAL NIPPER PLIERS

Specialized pliers for closing lead, Notox, and Alucast seals around wires or hemp cords. Available in three sizes, with optional embossing dies for logos or initials. Ensures a secure and tamper-evident seal, perfect for securing meters, containers, and critical assets. (SKU:3.12.001)

[Read More](#)



SEALING CLAMPS

Durable polycarbonate clamps protect meter connection nuts on gas and water meters. Designed for use with PL 95 ring seals for added security. Easy to install and reusable after removing the seal. Ensures tamper-evident sealing for utility fittings. (SKU:3.02.270.K)

ISO-Classification

Indicative

[Read More](#)



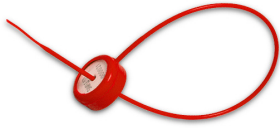
BP 570

BP 570 pull-tight seal secures meters and textile tags. Available in nylon or polypropylene with a steel locking mechanism. Ideal for hard-to-reach areas and narrow openings. Supports barcodes or logos. Nylon version requires cutting tools for removal. (SKU:3.19.709.K)

ISO-Classification

Indicative

[Read More](#)



BP 571

BP 571 pull-tight seal secures meters, gas cylinders, and textile tags. Features a polypropylene strap with a steel locking mechanism. Supports barcodes or logos and can be removed with cutting tools. (SKU:3.19.719.K)

ISO-Classification

Indicative

[Read More](#)



SEALING WIRE CUT LENGTHS

Pre-cut sealing wires in galvanized or plastic-coated steel, ideal for use with lead seals, Notox, and Cralu. Available in 25 cm (steel) or 30 cm (plastic-coated) lengths, bundled in packs of 1000 for easy handling. Designed to secure meters, containers, and fittings with reliable tamper-evident protection. (SKU:3.07.110)

ISO-Classification

Indicative

[Read More](#)



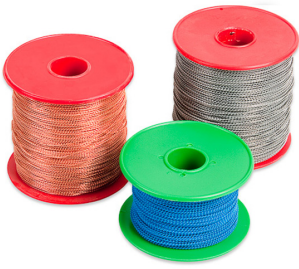
HEMP CORD

Hemp cord for use with lead seals, Notox, and Cralu. Supplied on rolls, the cord can be cut to the required length for applications. Ensures tamper-proof sealing for meters, ballot boxes, and valuables containers. Easy to handle and adaptable to various security needs. (SKU:3.16.010)

ISO-Classification

Indicative

[Read More](#)



SEALING WIRE - ROLL

Sealing Wire, used with Lead Seal, Notox, and Cralu, is available in rolls of copper, galvanized steel, or plastic. It offers flexibility in length and ensures secure applications for sealing. Ideal for various industries needing customizable, durable wire solutions. (SKU:3.07.070)

ISO-Classification

Indicative

[Read More](#)